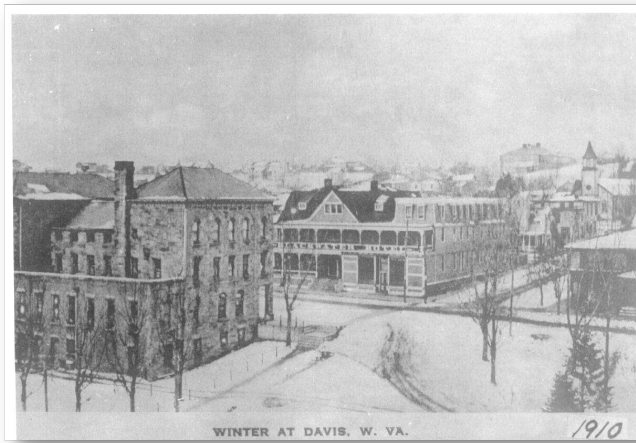


The Davis historic building signage covers 2 blocks of the William Avenue Commercial District from 1910. Not all buildings are still standing but the sites are marked. The historic railroad depot stood downhill from the old bank building between the sawmill complex (signage in Riverfront Park) and the downtown stores and restaurants. The town catered to the sawmill, pulp mill, and tannery workers with mercantile establishments, boarding houses, saloons, bowling alleys, barbershops, and a funeral parlor.



WALKING TOUR OF WILLIAM AVENUE DAVIS, WV

CONTACT US: Friends of Blackwater

P.O Box 247 - 571 Douglas Rd,
Thomas, WV 26292
304-345-7663

info@saveblackwater.org
www.saveblackwater.org

**Sponsored by WV
Humanities Council**



WILLIAM AVE. HISTORIC MAP

- 1 **Miners & A Minister**
Old Shop and Save
- 2 **Davis Colored School**
Old Shop and Save
- 3 **Davis Town Hall**
Davis Town Hall
- 4 **Steamship Office**
Sirianni's Cafe
- 5 **Babcock Office & Store**
Wandering Caravan
- 6 **Railroad Depot**
Wandering Caravan
- 7 **Town of Many Lives**
Visitors Center
- 8 **Blackwater Hotel**
Visitors Center
- 9 **Pennsylvania House**
Stumptown Ales
- 10 **Verzi's Saloon**
East West Printing
- 11 **Davis Lunch Room**
346 William Ave.
- 12 **Eagles Club**
F.O.E.
- 13 **Meyer Motor Sales**
Corner 3rd & William Ave.



The railroad began regularly scheduled service in 1885; even while Davis was still little more than a clearing in the forest with a scattering of new buildings. News of the new town and its close access to a mammoth tract of virgin timber quickly brought new businesses. In addition to the importance of the railroad as a mode of transportation for people and means to bring in mail and supplies, it also opened distant markets for local products. Immigrant families built their own American Dream at the town's lumber & pulp mills, shops, businesses, and factories.